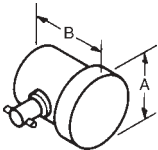


Contact Transducers

Single Element Contact Transducers are longitudinal wave transducers designed for general purpose manual ultrasonic inspection where test materials are relatively flat and smooth. Contact transducers provide high sensitivity for better penetration and are ruggedly constructed for extended service life under the roughest testing conditions.

PWCCR and PWCCS Style Contacts

Protective Wear Cap Contact Transducers have expendable wear caps which are easily replaced when worn. This means unlimited economy when the job calls for “scrubbing” which would normally destroy a standard contact probe. The PWCCR Style has right angle mounted BNC connectors while the PWCCS Style has straight top-mount BNC connectors. High temperature delay lines are also available for applications to 400 °F.



Element Diameter	A	B
.500	1.0	1.12
.750	1.25	1.12
1.000	1.50	1.12



Protective Wear Cap/Delay Line Transducers— PWCCR/PWCCS

Freq. (MHz)	Size (in.)	PRODUCT CODES				Accessories	Freq. (MHz)	Size (in.)	PRODUCT CODES			
		Gamma Series	Wear Cap 10 pc. Kit	HT Delay Line Kit*					Gamma Series	Wear Cap 10 pc. Kit	HT Delay Line Kit*	Accessories
1.0	.500	241-250-PWCCR 241-270-PWCCS	PC-221	PK-050-1" PK-060-1.5"	Cables 6' BNC C-016 6' LEMO C-018	3.5	.500	243-250-PWCCR 243-270-PWCCS	PC-221	PK-050-1" PK-060-1.5"	Cables 6' BNC C-016 6' LEMO C-018	
	.750	251-250-PWCCR 251-270-PWCCS	PC-241	PK-070-1" PK-080-1.5"			.750	253-250-PWCCR 253-270-PWCCS	PC-241	PK-070-1" PK-080-1.5"		
	1.00	261-250-PWCCR 261-270-PWCCS	PC-261	PK-090-1" PK-100-1.5"			1.00	263-250-PWCCR 263-270-PWCCS	PC-261	PK-090-1" PK-100-1.5"		
2.25	.500	242-250-PWCCR 242-270-PWCCS	PC-221	PK-050-1" PK-060-1.5"	Wear Cap Couplant XD-740	5.0	.500	244-250-PWCCR 244-270-PWCCS	PC-221	PK-050-1" PK-060-1.5"	Wear Cap Couplant XD-740	
	.750	252-250-PWCCR 252-270-PWCCS	PC-241	PK-070-1" PK-080-1.5"			.750	254-250-PWCCR 254-270-PWCCS	PC-241	PK-070-1" PK-080-1.5"		
	1.00	262-250-PWCCR 262-270-PWCCS	PC-261	PK-090-1" PK-100-1.5"			1.00	264-250-PWCCR 264-270-PWCCS	PC-261	PK-090-1" PK-100-1.5"		

* High Temp (HT) Delay Line: maximum temperature 400 °F, maximum contact time 10 seconds; cool to ambient before reuse.

